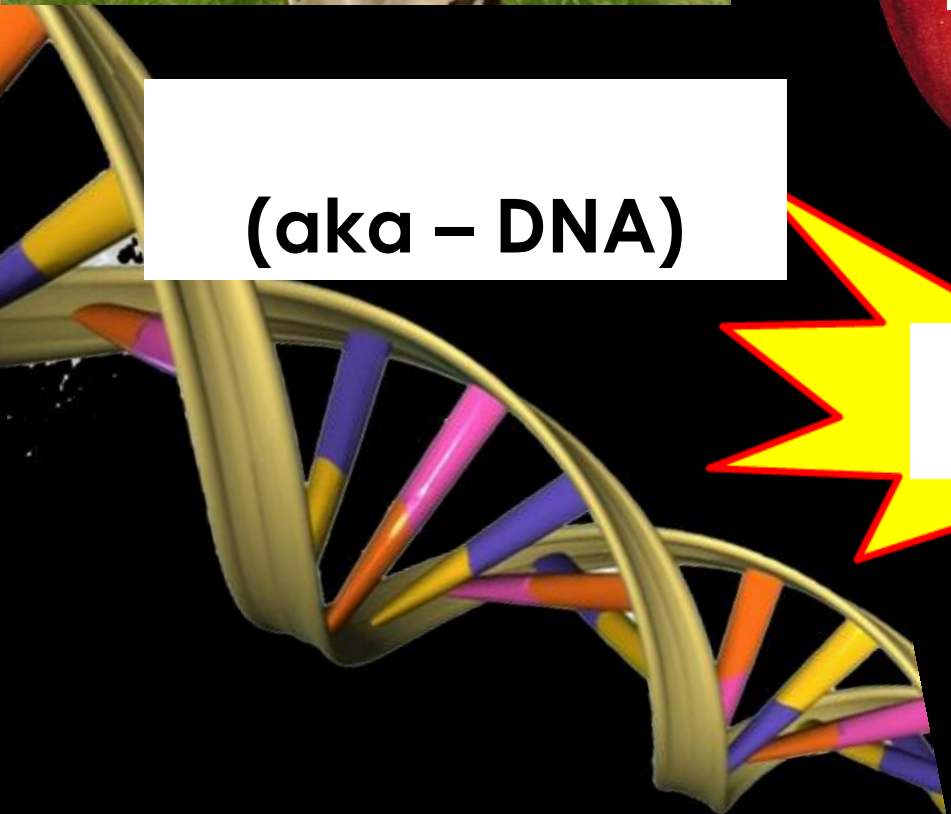
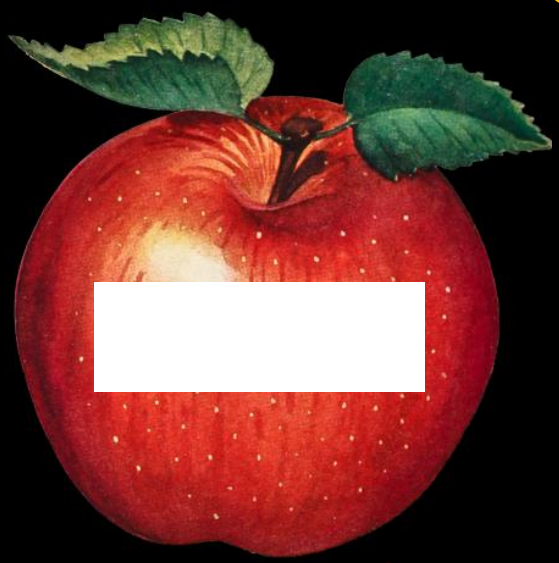


The Five Macromolecules



(aka - DNA)



Simple Sugar Molecules

Use in the Body

- _____ source of _____ for the cells

Food sources

- _____ and _____
- _____, _____, and _____

Subunits

- _____ long

- Simple sugar molecules include:

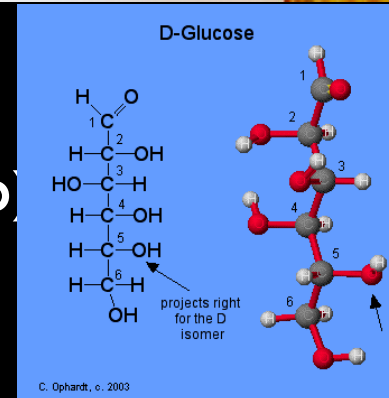
- _____ ($C_6H_{12}O_6$)

- _____ (Seen as part of high fructose corn syrup)

- _____

- - "Milk Sugar"

- - Made of glucose and galactose (another simple sugar)



Complex Sugar Molecules (aka – starches)

Use in the Body

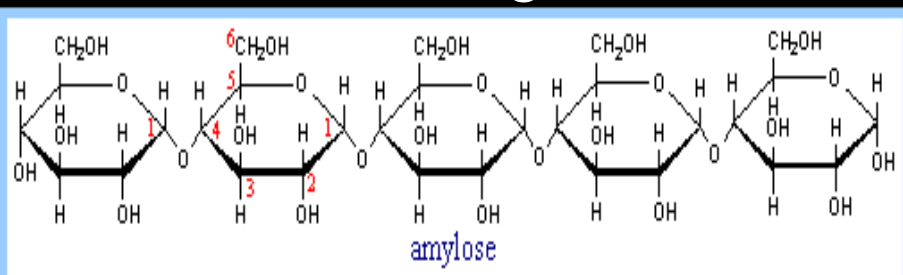
- _____ energy and _____ energy

Food Sources

- _____, _____, and pasta

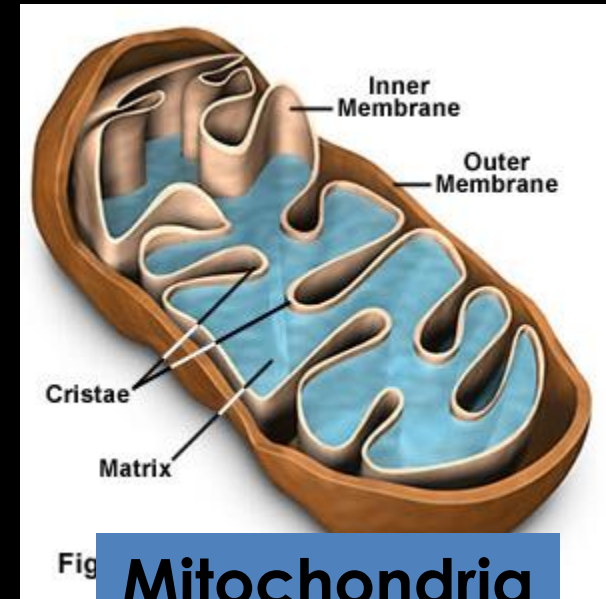
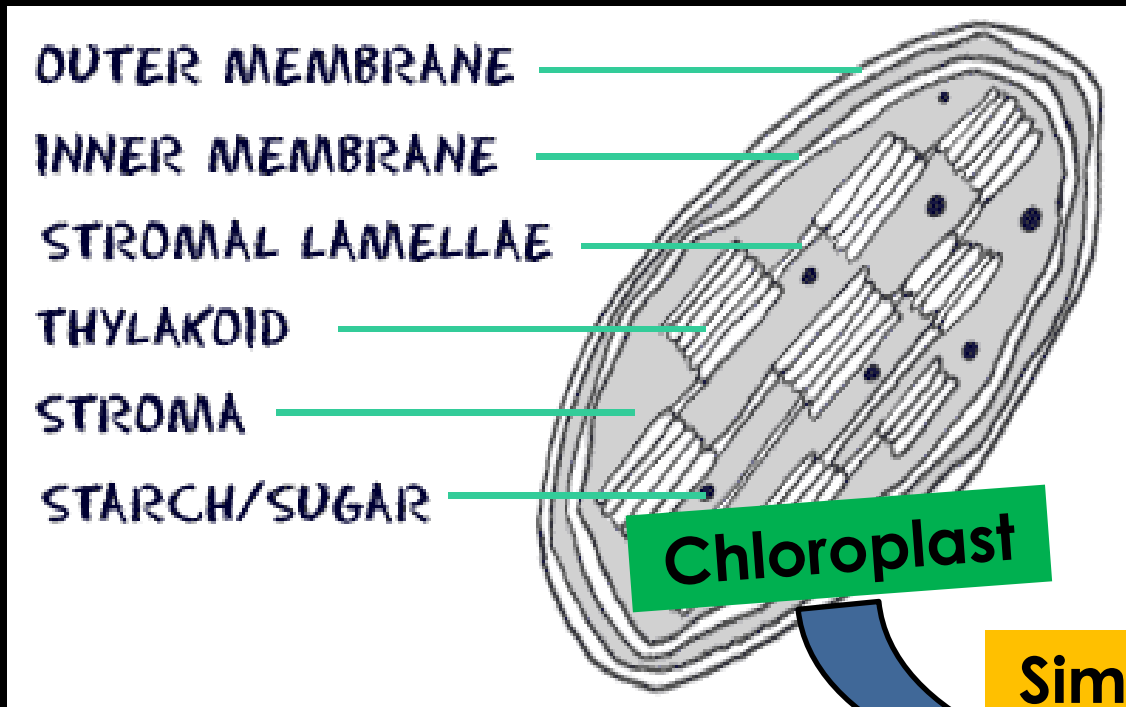
Subunit

- _____ sugar molecules long
- Complex sugar molecule includes:
 - _____ (_____ glucose)
 - Plants store glucose in the form of amylose (aka _____)



Complex Sugar Molecules

- After _____ produce individual molecules of _____, the glucoses are linked to form a _____ molecule (aka - _____ or _____)
- This starch is either stored in chloroplasts or broken down and exported to be used by the mitochondria



Simple sugar